



WORLDWIDE ELECTRIC MOTOR DATA SHEET



PEWWE200-12-505UZ

HORSEPOWER	200		
RPM / POLES	1200 / 6		
VOLTAGE / PHASE	460 V / 3		
FRAME	505UZ		
ENCLOSURE / DEGREE OF PROTECTION	TEFC / IP55		
FREQUENCY	60 HZ		
FULL LOAD SPEED	1190 RPM		
SERVICE FACTOR	1.15		
INSULATION CLASS	F		
FULL LOAD AMPS; 460	225 A		
LOCKED ROTOR AMPS (STARTING); 460	1450 A		
NO LOAD CURRENT	70.0 A		
NEMA CODE LETTER	G		
EFFICIENCY / POWER FACTOR	<u>LOAD</u>	<u>EFF.</u>	<u>P.F.</u>
	100%	95.8%	0.87
	75%	96.0%	0.85
	50%	95.9%	0.78
DUTY CYCLE	CONTINUOUS		
TORQUE	<u>FULL LOAD</u>	<u>LRT</u>	<u>BDT</u>
	882 lb.ft.	190%	250%
SLIP	0.83%		
NEMA DESIGN	B		
MOMENT OF INERTIA	105 lb.ft.²		
SOUND PRESSURE LEVEL	72 dB(A)		
MAX. TIME LOCKED ROTOR (Hot)	14 Seconds		
MAX. AMBIENT TEMPERATURE	40° C		
MAX. ELEVATION	3300 Ft. Above Sea Level		
TEMPERATURE RISE (At Full Load)	80° C		
DE BEARING	NU322		
ODE BEARING	6319		
REGREASING INT. - DE BEARING	2,100 Hours (1.82 oz.)		
REGREASING INT. - ODE BEARING	2,300 Hours (1.61 oz.)		
GREASE TYPE	Mobil Polyrex EM		
MOUNTING	F1		
ROTATION	Bi-Directional		
C-FLANGE	---		
D-FLANGE	---		
SHAFT MATERIAL	4140 Carbon Steel		
CONNECTION DIAGRAM	460 V - 6 Lead Δ		
APPROXIMATE WEIGHT	2470 lbs.		
INVERTER RATING	3:1 CT / 6:1 VT PWM Type		

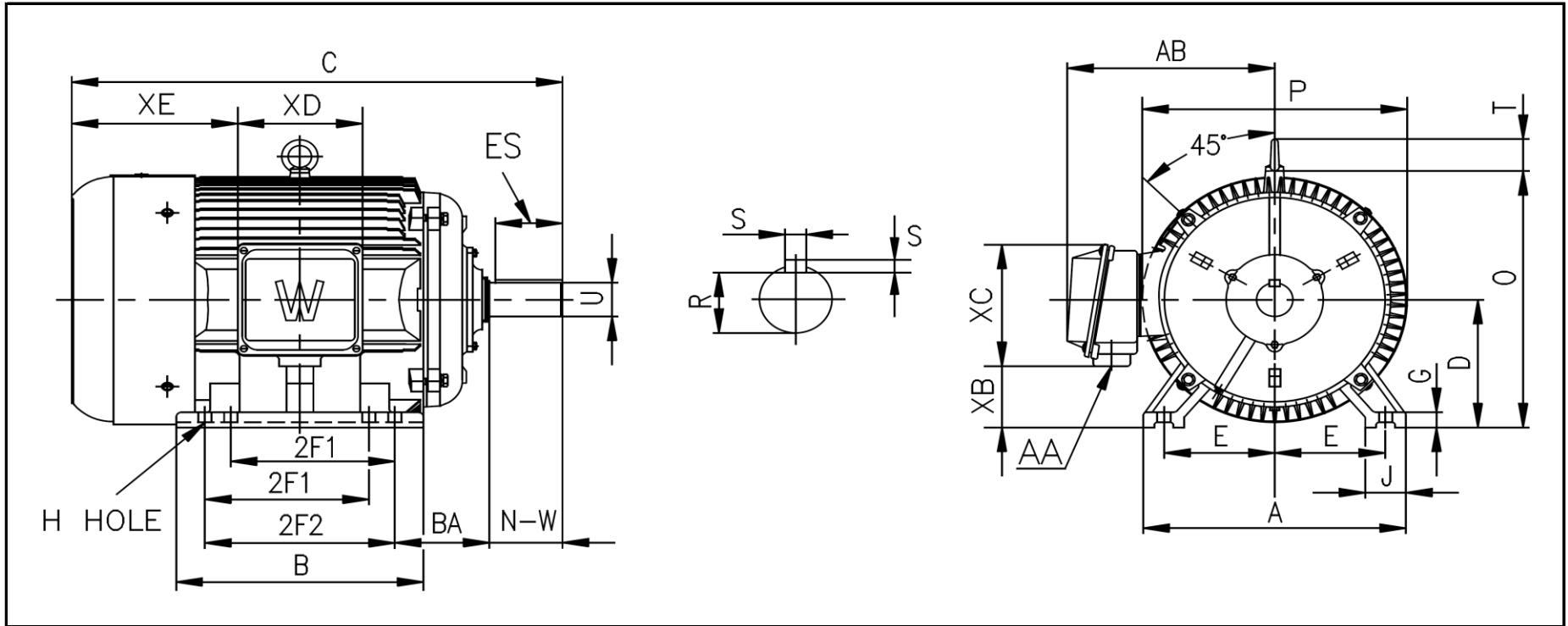


CC006A



WORLDWIDE ELECTRIC MOTOR DRAWING

PEWWE-505UZ



DIMENSIONS - INCHES

MOUNTING					A	B	C	D	G	J	P	O	T	AB
E	2F1	2F2	H	BA										
10	16	18	0.94	8.5	24.72	26	55	12.5	1.87	4.72	25	25.3	4.25	21

KEY		KEYSET	SHAFT		TERMINAL BOX				
S	ES	R	N-W	U	AA	XB	XC	XD	XE
1	10	3.309	11.625	3.875	2 x 3"	5	13.8	11.8	---